

No Images? [Click here](#)



## **OUR NEXT GENERAL MEETING**

**Date: September 5th**

**Time: 6:30 pm**

**Topic: Understanding Autism**

**Location: 6751 Gateway Dr. Columbia  
MD**

**Room: 401-4th Floor**

**For Directions click here.**

**Newsletter Volume 40, Issue 2,  
September 2019**

**Our next Board Meeting is September  
12th.**

**Please RSVP to Melissa Gaither.**

**Visit Us on the Web**

**Board of Directors**

**Committee Chairpersons**

**Provider Resources**

Click on the button above to get information on  
our Board & Committee Members.



**From Rhonda (President)**

Welcome back, I hope you have had a prosperous summer. I am looking forward to being your president for another year. We have a lot of things coming this year and I hope you are ready. We are in need of someone to step up for the Maryland State Family Childcare Association Rep. if you are interested please contact me at [hcfccabusiness@gmail.com](mailto:hcfccabusiness@gmail.com).

Next we are asking for people to step up and help in any area. Go around and ask any board or chair person if they need help during or outside the meeting. Remember this is your association.

Our September meeting is one that you don't want to miss. We will be handling the giveaways differently this year. You can earn extra tickets if you step up and help, have joined both of our Facebook pages and/or if you have submitted an article to our newsletter. After September I will let you know which activity will give you an extra ticket to that month's giveaway. **There will also be a special drawing for those that bring in someone to join the association.** Please remember our meeting is at Gateway for September.



### **From Uyen (VP of Education)**

Understanding Autism: Participants will begin to understand what an Autism diagnosis means & how to plan appropriate support. Objective of the class is to identify ways to modify the classroom or learning environment to appropriately meet the needs of all children and youth, including those with special needs, special healthcare needs, and/or developmental delays or disabilities.





**From Aisha (Vice President of Membership)**

If you need to change your name, address, phone number, email address or you are missing a certificate please contact the VP of Membership at [hcfccavpmembership@gmail.com](mailto:hcfccavpmembership@gmail.com)

Please check your email for renewal information. Be sure to pick up your receipt and new cards after you have renewed.



**Family Child Care**  
is not **Babysitting.**  
**It's not comparable**  
to any **child care center.**  
**IT'S FAMILIES** in  
**relationships**  
with a **PROFESSIONAL** care provider  
*in an* **environment**  
that becomes, **BY DESIGN**  
**a second home**

**a SECOND HOME,**  
and a whole **BUNCH** of **PEOPLE**  
**partnering, trusting, caring**  
**and educating each other.**

From Melissa (Newsletter Editor)

#### Newsletter Deadlines

Due Date	Newsletter Month
September 15th	October
October 13th	November
November 17th	December
December 22nd	January
January 12th	February
February 16th	March
March 15th	April
April 12th	May
May 17th	June
July 15th	Summer Newsletter

Please send your newsletter contributions to  
[newsletterhcfcca@gmail.com](mailto:newsletterhcfcca@gmail.com). Any contributions to the  
newsletter are eligible for a PAU.



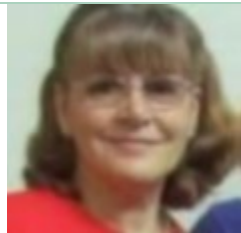
HCFCCA would like to help you showcase your second business. Advertise in our monthly newsletter. Advertising is open for members of HCFCCA and non members.

Advertisement Size	HCFCCA Member	Non Member
Full Page	\$20.00	\$30.00
Half Page	\$15.00	\$20.00
Quarter Page	\$12.00	\$15.00
Business Cards	\$8.00	\$10.00

Send your advertisement to [newsletterhcfcca@gmail.com](mailto:newsletterhcfcca@gmail.com). Formats that we accept are JPG and word documents. We cannot at this time accept anything in a pdf format. Ads with photos imbedded cannot be used. However, if you send the photo separately it can be attached to the ad. Be sure to include a contact number or email if any questions come up about your advertisement.. Please send your payment to

HCFCCA  
ATTN: Treasure/Advertisements  
PO BOX 2154  
Columbia MD 21045

Confirmation of payment will be made before your article is placed in the newsletter. Make sure your payment and advertisement are received before the newsletter deadline. Please write advertisement on the memo line of your check.



### **Application For Letter of Volunteerism**

**From Anita (Volunteer Committee)**

**Help! I need to earn a Professional Activity Unit (PAU)**

**“How can I earn a Professional Activity Unit (PAU) for the Maryland Credential Program?” To help you meet your need for**

**these PAUs, listed below are events that are coming up. Your attendance at any of these events will earn you a PAU. You must work the entire event or the time slot assigned. To sign up for any of these events listed in the first group, please contact Deena Kinnaman-dloveshearts@ aol or Angela Lamberti-atlamberti@aol.com.**

**September 14, 2019 Nearly New Sale at the Howard County Fair Grounds**

**January 2020 Children on Board usually at the Ten Oaks Ballroom**

**January/February Road to Kindergarten/Launch into learning Parent workshops**

**Held at 3 schools in Howard County and PAU issued by Joan Johnson\*\***

**March/April 2020 Nearly New Sales at the Howard County Fair Grounds**

**March/April 2020 Discovery Fair (PAU issued by Joan Johnson)**

**\*\*Child care will be offered at all sessions. All workshop work times are 6:00 pm to 8:00 pm. To sign up for these, please contact Joan Johnson. Workshops are held in January and February. Remember, being Credentialed is money in your pocket and a good selling item to parents. You must also be part of the Credential program to be in the EXCELS**



**program. Time you spend helping on committees for HCFCCA can also be tracked and submitted for a PAU when 6 hours of time or a donation at 6 meetings to our Hospitality table has been earned. There are many opportunities to help.**

**PRESS THE BLOCK UNDER MY PICTURE TO ACCESS THE PRINTABLE TIME TRACKING FORM**





**From Deena and Angela**  
**(Marketing and Public Relations)**

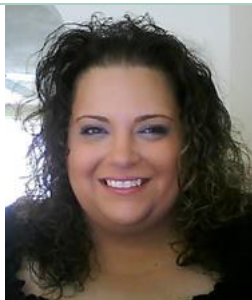
The **Nearly New Sale** is being held on September 14, 2019 (sign up will be available at our September meeting) **two more volunteers will be needed.** Please see me, Deena Kinnaman or Angela Lamberti at our monthly meeting on September 8th! Please be sure to fill out the volunteer sheet so that you will be correctly contacted as a reminder of your sign up.

Please attend the Early Care Childcare and Education Conference held at Turf Valley Resort in Ellicott City on Saturday, September 28. Topic will be "Closing the Achievement Gap: Helping All Children Learn" time is from 7:30 am - 4:00 pm. Register online with a credit card at [www.howardcountymd.gov/training](http://www.howardcountymd.gov/training).

If you are **NOT** attending the conference and would like to volunteer at our table to earn a PAU, a volunteer sheet will also be at our next monthly meeting. We have decided to again have a table at this conference. **Volunteers are needed** for fill three shifts: 6:45 am - 10:00 am, 10:00 am - 1:00 pm and 1:00 pm - 3:30-4:00 pm.

Please sign up and speak to me Deena Kinnaman or Angela Lamberti.

Thank you, welcome back to another great year HCFCCA!



**From Jody**  
**(MSFCCA Director)**

**[MSFCCA Online Registration](#)**

**[MSFCCA Conference Mailer](#)**



## **From Virginia (Mentoring/Networking, Accreditation and Credentialing)**

**The networking/mentoring committee has several fun events coming up this year.**

**We would love to see you come out and get to know your fellow providers better and have opportunities to ask questions, seek advice or just enjoy some adult company.**

**We will start off at Jigna Bhatt's house on Friday September 20th. We would love to have everyone bring a simple craft to share that can be done with your child care children. If you have a lesson plan that goes along with the craft that would be even better.**

**Saturday October 5th – Participate as a team in the Autism Walk at Centennial Park. I have created a team and would love for you all to join and raise money. Many of us have or have had children in our care that suffer with Autism. Go to <http://www.howard-autism.org/> (read flyer for details on registering ).**

**November 21st we will meet at Therese Mason's house for a fun evening of science. Come with some fun science experiments that we can do with our child care children.**

**December 13th, let's step out and go Bowling – a fun night of just socializing and having fun. We can do Duck Pins or 10 Pins – majority rules on this one so sign up early if you have a preference.**

**In January let's all go work at the soup kitchen in Baltimore. We can carpool and feed the less fortunate then grab a bite to eat on the way home.**

**In February we will meet at Carolyn Barth's house for some painting.**

In March we will go to LA 'Madeleine's for a Credentialing workshop – need to get to the next level – let's figure it out.

In April or May lets try and have a yard sale – anyone belong to a church were we could use their parking lot on a Saturday morning – contact me please!

**Walk with your fellow providers and help support Howard County Families dealing with Autism**

**How to Register for the 13<sup>th</sup> Annual HCAS Walk and 5K Run at Centennial Park on October 5<sup>th</sup>**

Go to: <http://www.howard-autism.org/>

Click on the Walk&5K Button

Follow the registration steps and when you get to step 3 JOIN OUR TEAM – Howard County Family Child Care

Share the information with your families and get them to donate.

**DON'T MISS OUT!**

- Register by **September 14** to be guaranteed a T-Shirt!
- Early packet pick-up **October 3, 5:00-8:00pm** at RoadRunner Sports, 6630-C Marie Curie Drive, Elkridge, MD. Special savings on Road Runner purchases that evening!
- **Online registration closes October 3 at noon!** On-site registration will be available on October 5th at the evening beginning at 9:00am

**THANK YOU FOR BEING PART OF THIS EVENT!**

For more than 25 years, the Howard County Autism Society (HCAS) has served individuals on the autism spectrum, their families and the community. HCAS:

- Provides information, support and advocacy
  - Promotes an awareness of autism that values the dignity and uniqueness of each individual; and
  - Works to improve the quality of and access to services and educational opportunities throughout an individual's lifespan
- 
- **Questions?** Email [info@howard-autism.org](mailto:info@howard-autism.org) or call 410-290-3466.



## Family Child Care Home Bonuses

Maryland EXCELS bonuses will be paid to Maryland EXCELS participating programs that publish a first-time quality rating 1 through 5, or republish a quality rating 5, from October 1, 2018 through September 30, 2019.

Quality Rating	Bonus Amount
1	\$50
2	\$150
3	\$300

3	\$500
4	\$500
5	\$800

## Large Family Child Care Home Bonuses

Maryland EXCELS bonuses will be paid to Maryland EXCELS participating programs that publish a first-time quality rating 1 through 5, or republish a quality rating 5, from October 1, 2018 through September 30, 2019.

Quality Rating	Bonus Amount
1	\$50
2	\$200
3	\$400
4	\$800
5	\$1,000

[www.marylandexcels.org/bonus](http://www.marylandexcels.org/bonus)



**\*PLEASE READ - IMPORTANT:** Per TPC/CACFP General Policies, Section 6 - You must call the absence hotline in our VA office @ 1-800-477-3993, ext. 3070 when you are planning to be out of your home during a meal service period, are closed for the day and/or have no children in attendance. At the time leave your name, provider number, and the state in which you live, and the dates and times you will be away.



## Welcome to the Child & Adult Care Food Program

"Where healthy eating becomes a habit"

*In addition to the nutrition education offered by your individual Field Monitor, here are some helpful links to resources and educational materials:*

- ◆ The Planning Council's Website – Children's Services:

<http://www.theplanningcouncil.org>

- ◆ Entering claim data, enrolling children, reviewing reports, etc.
  - [www.kidkare.com](http://www.kidkare.com)
  - <https://help.kidkare.com/help>
  - Like KidKare on Facebook for news and updates.
- ◆ Nutrition and Wellness Tips for Young Children – Provider Handbook for the Child and Adult Care Food Program (Team Nutrition Resource Library):

[http://www.teamnutrition.usda.gov/Resources/nutritionandwellness.html?goback=.gmp\\_1807282.gde\\_1807282\\_member\\_204783361](http://www.teamnutrition.usda.gov/Resources/nutritionandwellness.html?goback=.gmp_1807282.gde_1807282_member_204783361)

- ◆ Feeding Infants – A Guide for Use in the Child Nutrition Programs:

[http://teamnutrition.usda.gov/Resources/feeding\\_infants.pdf](http://teamnutrition.usda.gov/Resources/feeding_infants.pdf)

- ◆ Redleaf Institute – Early Child Care Resources & Publications:

[www.redleafpress.org](http://www.redleafpress.org)

- ◆ Tom Copeland - the nation's leading expert on family child care business issues and former director of Redleaf National Institute.

[www.tomcopeland.net](http://www.tomcopeland.net)

- 
- ◆ Maryland Family Network:

[http://www.mdchildcare.org/mdcfttr\\_providers/childcare.html](http://www.mdchildcare.org/mdcfttr_providers/childcare.html)

- ◆ IRS Website – Publication 587 – Business Use of Your Home:

[www.irs.gov](http://www.irs.gov)

## CACFP REMINDERS

**Provider Number:**

**Field Monitor Name & Number: FERNANDA  
BRITO**

**Field Monitor Phone Number: 443.850.1056**

**Field Monitor E- Mail:**  
**[fabrito@theplanningcouncil.org](mailto:fabrito@theplanningcouncil.org)**

**Every Month, by the 1ST of the month,  
enrollments & enrollment renewals to:**

**FERNANDA BRITO, FIELD MONITOR**

**THE PLANNING COUNCIL - CACFP**

**672 OLD MILL ROAD, #310**

**MILLERSVILLE, MD 21108**

**C**

**Web Address: [www.kidkare.com](http://www.kidkare.com) Login: 019**  
**Password: [lower case only]**

**Your Field Monitor is available as the “first” point  
of contact for your customer service needs, in the  
event that you are unable to reach your Field  
Monitor, you may contact our offices @:**

**Maryland/DC Office: Phone: 410.967.5848**

**VA Toll Free: 1.800.410.9774**

**Fax #: 410.510.1024**

**Program Manager, Systems & Compliance: Lisa Lyons – Cell: 410.967.5848**

**Program Manager, Monitor & Provider Serv.: Vicki Reece – 1.800.410.9774, ext. 3036**

**Virginia Office: Phone: 757.622.9268**

**Address: The Planning Council**

**2531 Eltham Avenue, Suite I**

**Norfolk, VA 23513**

**By the 1st (but no later than the 3rd) the following items should be complete:**

- **Claims should be reviewed for accuracy and submitted in KidKare.**
  - **Reports > Meals and Attendance > Food Served > Month > Run, and/or**
  - **Reports > Meals and Attendance > Claimed Food and Attendance > Run, then submit**
  - **Food Program > Send to Sponsor > Read and Agree to Terms of Submission > Send**
- **Enrollments for “Pending” & “Expiring or Expired” children should have been mailed to your Field Monitor at the address listed above – \*NOTE: Infant Enrollments with incomplete Infant Waivers will not be processed and may cause result in loss of reimbursement for that infant’s meals.**

**After your Claim is submitted and processed, remember to:**



- After the 15th of each month, Review your Claim Summary and Error Report in KidKare under: Reports > Claim Statements > Claim Summary & Error > Select Month.
- You must report any errors or claim reductions to your Field Monitor within five (5) days of receipt of your claim reimbursement.
- Look for Claim Payment Updates via your “kidkare” message box.

**\*PLEASE READ - IMPORTANT:** Per TPC/CACFP General Policies, Section 6 - You must call the absence hotline in our VA office @ 1-800-477-3993, ext. 3070 when you are planning to be out of your home during a meal service period, are closed for the day and/or have no children in attendance. At the tone leave your name, provider number, and the state in which you live, and the dates and times you will be away.

## **Welcome to the Child & Adult Care Food Program**

**“Where healthy eating becomes a habit”**

In addition to the nutrition education offered by your individual Field Monitor, here are some helpful links to resources and educational materials:

- The Planning Council’s Website – Children’s Services:

<http://www.theplanningcouncil.org>

- Entering claim data, enrolling children, reviewing reports, etc.

[www.kidkare.com](http://www.kidkare.com)

<https://help.kidkare.com/help>

**Like KidKare on Facebook for news and updates.**

- **Nutrition and Wellness Tips for Young Children – Provider Handbook for the Child and Adult Care Food Program (Team Nutrition Resource Library):**

**[http://www.teamnutrition.usda.gov/Resources/nutritionandwellness.html?goback=.gmp\\_1807282.gde\\_1807282\\_member\\_204783361](http://www.teamnutrition.usda.gov/Resources/nutritionandwellness.html?goback=.gmp_1807282.gde_1807282_member_204783361)**

- **Feeding Infants – A Guide for Use in the Child Nutrition Programs**

**[http://teamnutrition.usda.gov/Resources/feeding\\_infants.pdf](http://teamnutrition.usda.gov/Resources/feeding_infants.pdf)**

- **Redleaf Institute – Early Child Care Resources & Publications:**

**[www.redleafpress.org](http://www.redleafpress.org)**

- **Tom Copeland - the nation's leading expert on family child care business issues and former director of Redleaf National Institute.**

**[www.tomcopeland.net](http://www.tomcopeland.net)**

- **Maryland Family Network**

**[http://www.mdchildcare.org/mdcfc/for\\_providers/childcare.html](http://www.mdchildcare.org/mdcfc/for_providers/childcare.html)**

- **IRS Website – Publication 587 – Business Use of Your Home:**

**[www.irs.gov](http://www.irs.gov)**

**THIS INSTITUTION IS AN EQUAL  
OPPORTUNITY PROVIDER**

•

## **Maryland State Department of Education(MSDE) Corner**

The Division of Early Childhood Development has a new name.....**The Division of Early Childhood!!!**

Understanding the roles and responsibilities of the Division of Early Childhood and its branches can making finding the assistance and answers you need much easier. Under the direction of Assistant State Superintendent Steven Hicks, the Division is responsible for early care and education in Maryland. The main mission of the Division is to improve early education in Maryland so that young children are well prepared for school.

OFFICE OF CHILD CARE - Jennifer Nizer, M. Ed.,  
Director

Licensing Branch - Louis 'Lou' Valenti, Branch Chief

Child Care Subsidy Branch - Rene Williams, Branch Chief



Credentialing Branch - Angeline Bishop-Oshoko, Branch Chief

Early Learning Branch - Judy Walker, Branch Chief





Maryland EXCELS - Lindi Budd, Branch Chief

Collaboration and Program Improvement Branch -  
Cynthia LaMarca Lessner, Branch Chief

## Contacting the Division Branches

Office of Child Care –  
[earlychildhood.msde@maryland.gov](mailto:earlychildhood.msde@maryland.gov)

Early Learning Branch  
[early.learningbranchesmsde @maryland.gov](mailto:early.learningbranchesmsde@maryland.gov)

Collaboration and Program Improvement Branch  
– [collaboration.programimprovement  
@maryland.gov](mailto:collaboration.programimprovement@maryland.gov)

Licensing – [licensingocc.msde@maryland.gov](mailto:licensingocc.msde@maryland.gov)

Credentialing –  
[credentialocc.msde@maryland.gov](mailto:credentialocc.msde@maryland.gov) or 1-866-243-  
8796

Subsidy – [ccscentral@conduent.com](mailto:ccscentral@conduent.com) or 1-866-  
243-8796

Maryland EXCELS – [info@marylandexcels.org](mailto:info@marylandexcels.org)

**IMPACT Summer Edition (Division of  
Early Childhood Newsletter)**

**Tuesday Tidbits August 13, 2019**

## **RECIPES**



### **Pizza Moons**

Adapted from Allrecipes.com

#### **Ingredients**

- 1 (8 ounce) package refrigerated crescent rolls
- 4 cups shredded mozzarella cheese
- 16 slices pepperoni
- Hormel Sliced Original Pepperoni 7 Oz
- 1/2 cup Parmesan cheese
- Add all ingredients to list

#### **Directions**

**Prep time**15 minutes    **Cook time**15 minutes  
**Ready In** 30 minutes

1. Preheat an oven to 375 degrees F (190 degrees C).
2. Unroll crescents onto work surface. Top each piece of dough with shredded cheese and a few

slices of pepperoni. Sprinkle on a bit more cheese, and roll into crescent shape. Place pizza "moons" on a baking sheet.

3. Bake until crescents are golden brown, 12 to 15 minutes. Remove from oven, and sprinkle with Parmesan cheese.

- Any type of cheese can be used. Try sausage or chicken in place of the pepperoni.

#### **Nutrition Facts**

**Per Serving: 295 calories; 18.2 g fat; 12.8 g carbohydrates; 18.5 g protein; 45 mg cholesterol; 712 mg sodium. Full nutrition**

## **CRAFT**

### **All About Me Theme Activity**

#### **My Portrait**

**Materials Needed: Pre-cut people shapes (like paper dolls) on heavy tagboard or cardboard; hand mirrors; markers; crayons, variety of yarn (for hair); scissors; glue**

**The children use the mirrors to draw themselves onto the cut-out. This is best done in small groups (4 or under) so that you have time to talk with the small group about their eye color, hair color, etc.**



## HCFCCA FUNDRAISERS

### HCFCCA Shaklee Fundraiser



The Shaklee Difference, Always Safe, Always Works, Always Green We are offering our members the option to use Shaklee Products; you can feel confident that they are safe, they work and that they are also green. All with a money back guarantee! Help support a great cause: Click the button below to place an order.

**HCFCCA Shaklee Fundraiser**

**CONFERENCE REGISTRATION**



# Early Care and Education CONFERENCE



Saturday, September 28, 2019  
7:30 a.m. to 4:00 p.m.

**Turf Valley Resort**  
2700 Turf Valley Road  
Ellicott City, MD 21042

## Closing the Achievement Gap: Helping All Children Learn

Join us for a day of awareness and education on the life altering obstacles many of our families and programs face. With a variety of expert presenters, we will break down the walls on bias, special needs, under-resourced and dual language learners while providing strategies to close the achievement gap to help ALL children learn and succeed.

### GENERAL SESSION PRESENTATION

#### **Implicit Biases in Early Childhood Settings – How to Create a Healthy Social-Emotional Environment**

Dr. Walter Gilliam, PhD, Yale University

This presentation will discuss the latest findings regarding expulsion and suspension practices in early education settings, gender and racial disproportionality, and potential causes for these disparities, including the potential role of implicit bias. Although the presentation will focus on research findings, attendees will also be exposed to emerging information about how early educators understand implicit bias and how preschool expulsions and suspensions are understood within a social justice and civil rights framework. Early childhood mental health consultation will be discussed as a means for addressing issues of both social-emotional climate and equity in early childhood settings.

**Early Registration Pricing Ends Friday, August 16**

[www.howardcountymd.gov/training](http://www.howardcountymd.gov/training)

## Breakout Sessions

### Morning

#### SESSION A

##### **Supporting Under-Resourced Children and Families (2 SN)**

Presented by Cyndi Lessner

This workshop will discuss how to effectively engage struggling families and their children who may be under-resourced (living in poverty, homelessness and experiencing the effects of traumatic stress). We will examine the early childhood educator's role within the community to ensure all children and families receive the required support and resources to achieve success.

#### SESSION B

##### **Second Language Acquisition Connecting Theory & Practice (2 SN)**

Presented by Esteban Morales

This workshop will dispel the myths and fallacies about brain development and second language acquisition. We will take an in-depth look at the significance of quality teacher-child interactions while addressing the best practices to support dual language learners. Strategies developed from CALLA (Cognitive Academic Language Learning Approach) will be introduced.

#### SESSION C

##### **Early Intervention for Children Birth to Three (2 SN)**

Presented by Beverly Lyles

This workshop will address typical development and resources to support the identification of atypical or delayed development in children from birth to three. Strategies will be explored to facilitate development and identify tools to support students with delays.

#### SESSION D

##### **Classroom Climate, Early Childhood Mental Health Consultation, Bias and Equity (2 SN)**

Presented by Walter Gilliam

This workshop will discuss how the overall mental health climate of early childhood relates to outcomes regarding equity, bias, and discrimination.

### Afternoon

#### SESSION E

##### **Supporting Under-Resourced Children and Families (2 SN)**

Presented by Cyndi Lessner

This workshop will discuss how to effectively engage struggling families and their children who may be under-resourced (living in poverty, homelessness and experiencing the effects of traumatic stress). We will examine the early childhood educator's role within the community to ensure all children and families receive the required support and resources to achieve success.

#### SESSION F

##### **Second Language Acquisition Connecting Theory & Practice (2 SN)**

Presented by Esteban Morales

This workshop will dispel the myths and fallacies about brain development and second language acquisition. We will take an in-depth look at the significance of quality teacher-child interactions while addressing the best practices to support dual language learners. Strategies developed from CALLA (Cognitive Academic Language Learning Approach) will be introduced.

#### SESSION G

##### **Best Practices for Supporting Young Learners with Special Needs (2 SN)**

Presented by Linda Murveit

This workshop will cover teaching strategies to serve children aged 3-5 with different abilities. We will identify evidence-based practices, as well as red flags and when to make student referrals. Participants will develop strategies for self-care and to prevent burnout.

#### SESSION H

##### **Classroom Climate, Early Childhood Mental Health Consultation, Bias and Equity (2 SN)**

Presented by Walter Gilliam

This workshop will discuss how the overall mental health climate of early childhood relates to outcomes regarding equity, bias, and discrimination.

outcomes regarding equity, stress and depression will be explored, as well as the ability of care staff to appropriately respond to subtle social cues from children. Hallmarks of classroom practices that promote equity will be reviewed.

outcomes regarding equity, stress and depression will be explored, as well as the ability of care staff to appropriately respond to subtle social cues from children. Hallmarks of classroom practices that promote equity will be reviewed.

## **\$75 Early Bird Registration ends Friday, August 16 (\$90 as of August 17)**

MSDE Credential Vouchers accepted until July 20; however, you must submit copy of voucher with registration.

### **Final Registration Date Friday, September 7, 2019!**

**QUESTIONS:** Contact Kristin Reel at 410-313-1923 (voice/relay) or [kreel@howardcountymd.gov](mailto:kreel@howardcountymd.gov)

**LOCATION:** Turf Valley Resort  
2700 Turf Valley Road  
Ellicott City, MD 21042

**REGISTRATION:** Register online with a credit card at [www.howardcountymd.gov/training](http://www.howardcountymd.gov/training). Registrations may also be mailed using the form below (credit card/check/money order). There will be a \$25 fee for returned checks.

**CHANGES/CANCELLATION:** Registration fees are not refundable. Credit for future use may be issued prior to Friday, September 7, no changes or cancellations after registration deadline without valid documentation and Training Coordinator approval.

**WORKSHOP CREDIT/POLICIES:** Participants must be present for the entire workshop to receive core of knowledge credit. To be eligible for a MSDE Professional Activity Unit (PAU), participants must be present for the entire conference.

Child Care Training Approval Number: CWO-157585

## **Mail Registration Form**

**\$75 Early Bird Registration ends Friday, August 16 (\$90 as of August 17)**

Name \_\_\_\_\_ Program Name \_\_\_\_\_  
Position Type (circle one) FAMILY CC TEACHER ASST. TEACHER AIDE OWNER/DIRECTOR OTHER: \_\_\_\_\_  
Mailing Address \_\_\_\_\_ County \_\_\_\_\_  
Phone (h) \_\_\_\_\_ (w) \_\_\_\_\_ (c) \_\_\_\_\_  
Email \_\_\_\_\_ Birthdate (mm/dd/yy) \_\_\_\_/\_\_\_\_/\_\_\_\_

### **BREAKOUT SESSION SELECTION**

All participants will attend the morning general session. Breakout sessions are assigned as registrations are received. Placement is not guaranteed, but every effort will be made to meet your training needs. Please rank your sessions 1 to 4 based on your preference. **Class sizes are limited; early registration is recommended.**

#### **MORNING SESSIONS (RANK 1 TO 4)**

- \_\_\_\_ Session A — Supporting Under-Resourced Children and Families
- \_\_\_\_ Session B — Second Language Acquisition Connecting Theory & Practice
- \_\_\_\_ Session C — Early Intervention for Children Birth to Three
- \_\_\_\_ Session D — Classroom Climate, Early Childhood Mental Health Consultation, Bias and Equity

#### **AFTERNOON SESSIONS (RANK 1 TO 4)**

- \_\_\_\_ Session E — Supporting Under-Resourced Children and Families
- \_\_\_\_ Session F — Second Language Acquisition Connecting Theory & Practice
- \_\_\_\_ Session G — Best Practices for Supporting Young Learners with Special Needs
- \_\_\_\_ Session H — Classroom Climate, Early Childhood Mental Health Consultation, Bias and Equity

**\*\* Buffet lunch with sandwich platters, salads and desserts will be served. \*\***

**CHECK/MONEY ORDER PAYABLE TO: HOWARD COUNTY DIRECTOR OF FINANCE**

MAIL: Howard County Office of Children and Families • 9830 Patuxent Woods Drive, Columbia, MD 21046

Name on Card \_\_\_\_\_ Exp. Date \_\_\_\_\_  
Credit Card No. \_\_\_\_\_ CVV \_\_\_\_\_

If you need this information in an alternate format, call 410-313-1940 (voice/relay).  
To request accommodations to participate, call at least two weeks in advance.



## **CONFERENCE AGENDA**

7:30 - 8:15 a.m.	Registration, Breakfast, and Vendor Gallery
8:15 - 8:30 a.m.	Welcome
8:30 - 10:30 a.m.	Keynote - Implicit Biases in Early Childhood Settings: How to Create a Healthy Social-Emotional Environment
10:30 - 10:45 a.m.	Break with Refreshments
10:45 a.m. - 12:45 p.m.	Breakout Session I
12:45 - 1:45 p.m.	Lunch, Networking and Vendor Gallery
1:45 - 3:45 p.m.	Breakout Session II

**Participants receive 6 hours Core of Knowledge credit and may submit certificate to MSDE Credentialing for 1 Professional Activity Unit**

The Howard County Child Care Resource Center is a member agency of the Maryland Child Care Resource Network with funding provided by Howard County Government and Maryland Family Network. This publication was produced as a work for hire for the benefit of, and with funds from, the Maryland State Department of Education.

## **Registration Deadline Friday, September 7**

[www.howardcountymd.gov/training](http://www.howardcountymd.gov/training)

**\$75 Early Bird Pricing  
Expires Friday, August 16**





## Fall 2019 School Readiness Series

A partnership between Howard County Public Schools (HCPSS) and  
the Howard County Office of Children and Families (OCF).

The Launch Into Learning School Readiness Series, facilitated by HCPSS staff, focuses on kindergarten readiness and how early care and education professionals can support families with young children ages 3-5. Each session takes an in-depth look at a specific learning domain which is aligned with current Maryland standards to ensure your program supports children in all areas of development. Participants will learn how to enhance their program by using effective strategies, activities and resources to support children and their families.

**Participants who complete all 7 sessions will receive a completion certificate from HCPSS to market their participation to child care families.**

Visit [www.howardcountymd.gov/training](http://www.howardcountymd.gov/training) to register online for  
[Launch Into Learning School Readiness Series](#) or call 410-313-1442

14 hours Core of Knowledge Training (7 CUR, 7 CD)

HCPSS Staff Instructors, 6:30 – 8:30 PM

Cost: \$70.00 (includes materials)

**Atholton Elementary School**

6700 Seneca Dr, Columbia, MD 21046

October 1	Launch Into Learning - Classroom Environment, Fine Arts
October 8	Launch Into Learning - Social Foundations
October 15	Launch Into Learning - Language and Literacy
October 22	Launch Into Learning - Mathematics
October 29	Launch Into Learning - Physical Well Being/Motor Development
November 12	Launch Into Learning - Science
November 19	Launch Into Learning - Social Studies

No class on Nov. 5th



### CONTACT US

Howard County Family Child Care Association

HCFCCA

P.O. Box 2154

Columbia, MD 21045

(301) 776-4841

You are a member of HCFCCA, this entitles you to our monthly newsletter.

[Unsubscribe](#)